

User Manual

Model No.: SF043 (V1.0)

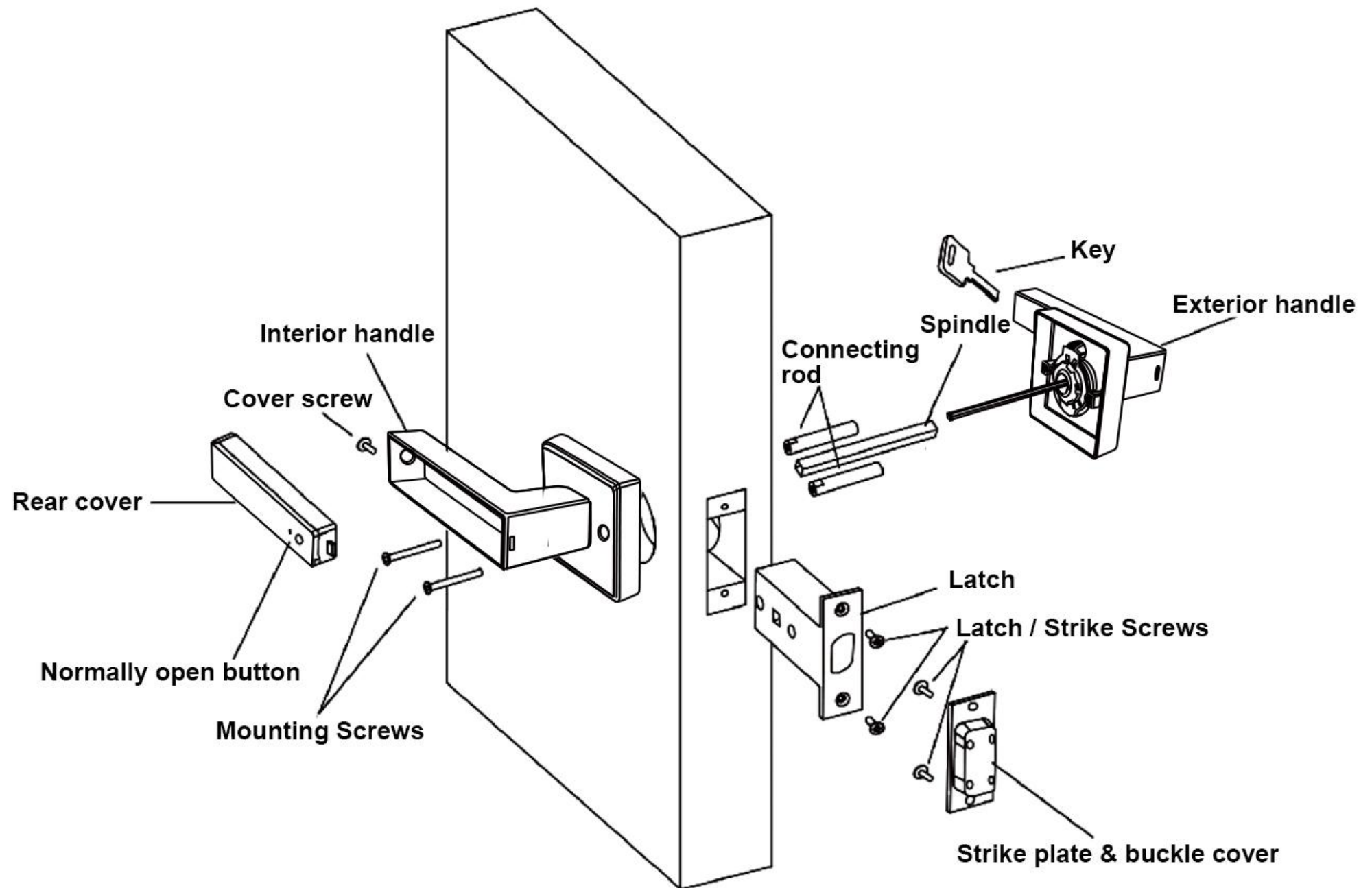


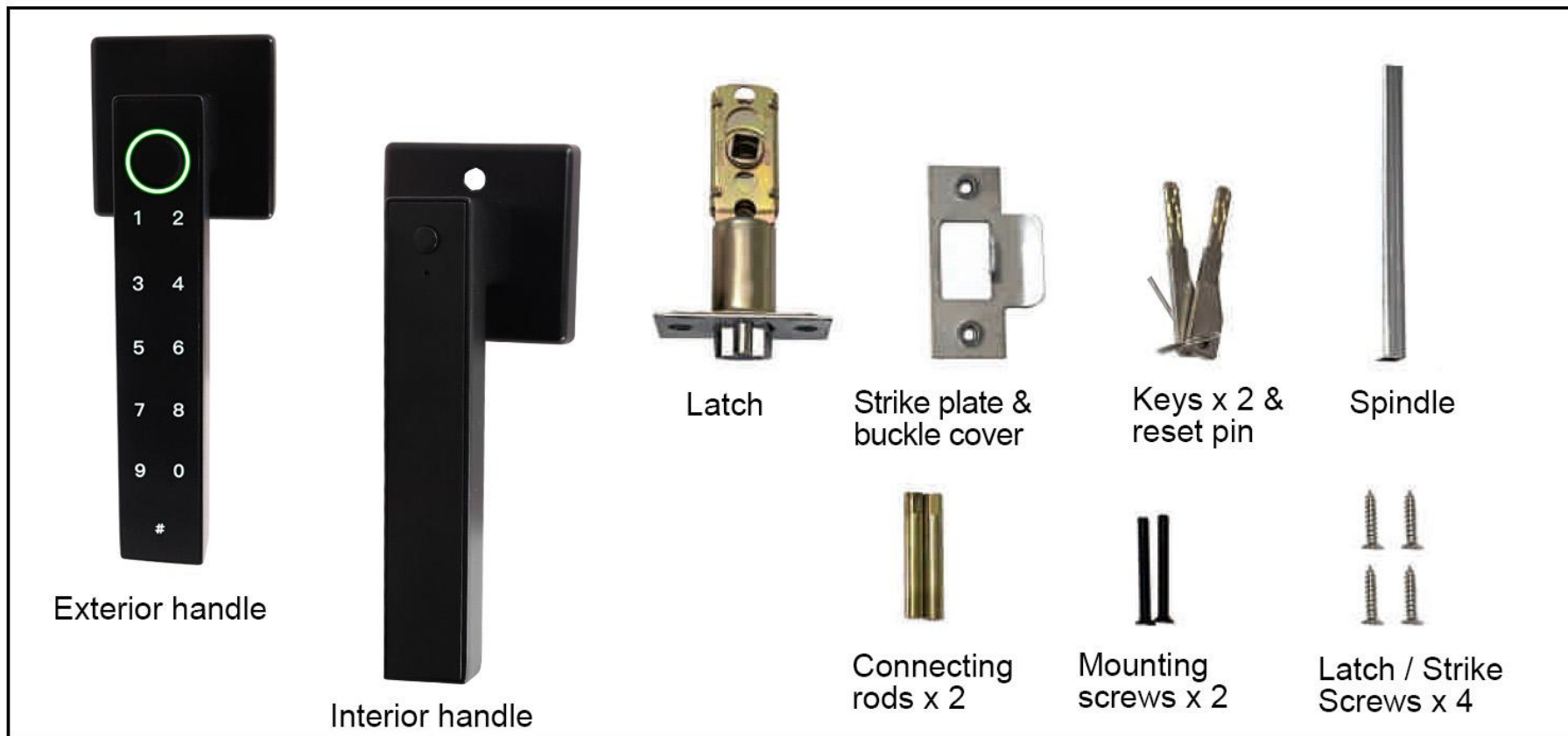
IMPORTANT: Read the instructions carefully before operating the appliance and keep them for future reference.

Cotent

What's in the Box?	1
Installation Guide	3
1. Prepare the door and check dimensions	3
2. Install the latch and strike plate.....	4
3. Install the door lock.....	5
4. Important! Check after Installation	8
Programming Instructions	9
Information & Safety Warnings	9
Definitions.....	10
Quick Set Up	11
Normal Open Passage setting.....	12
Factory Reset / Delete Admin.....	12
Low battery alarm & Emergency Unlock.....	13
Trouble Shooting	13
Important safeguard	14

What's in the Box?





TOOL REQUIRED:



USE OF A POWERED SCREWDRIVER IS NOT RECOMMENDED

Batteries

Smart lock requires 4 AAA batteries to be purchased separately, using only new and non-rechargeable AAA Alkaline batteries for the best results.



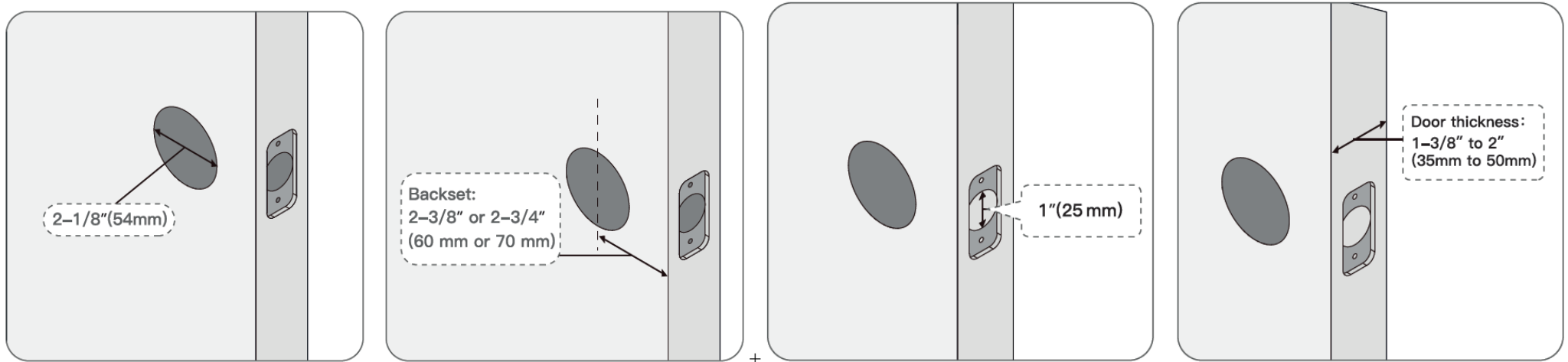
DO NOT mix new batteries with used batteries.

Installation Guide

1. Prepare the door and check dimensions

Measure to confirm:

- ◆ Door hole in the door is 2-1/8" (54mm).
- ◆ Backset is either 2-3/8" or 2-3/4" (60 or 70mm).
- ◆ Latch hole in the door is 1" (25mm).
- ◆ Door thickness is between 1-3/8" and 2" (35mm to 50mm).



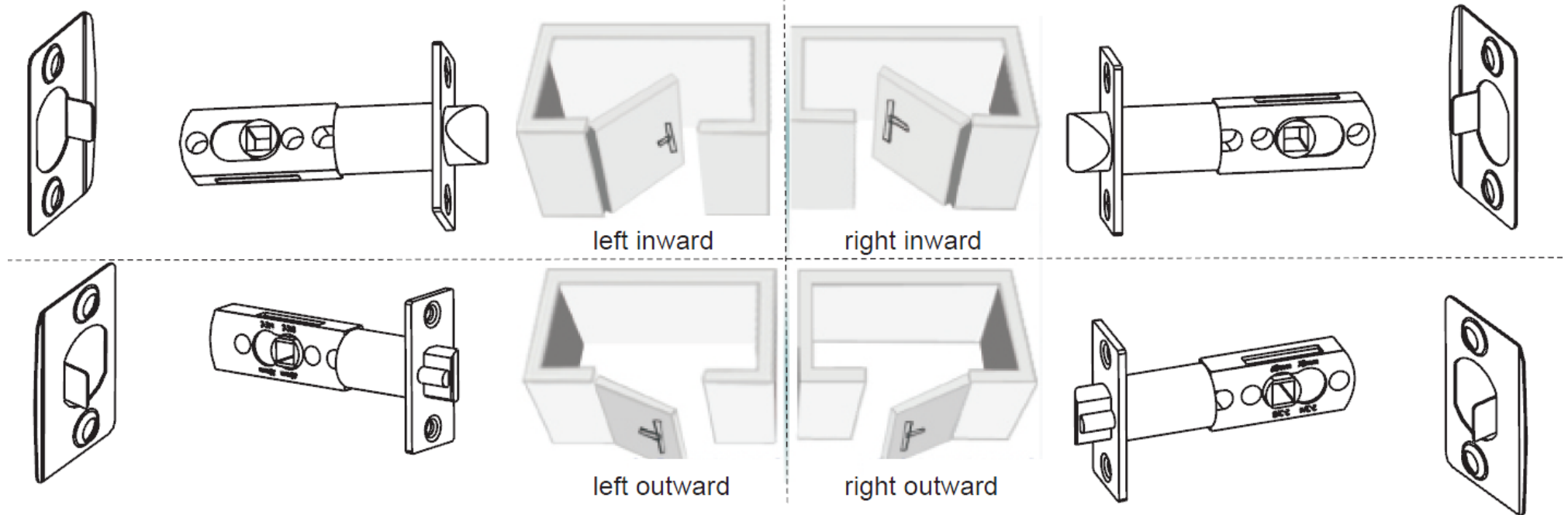
If your door does not have a ready-made lock mounting hole, you need to complete the additional hole-drilling work yourself.



DO NOT install this product if your door thickness is out of range.

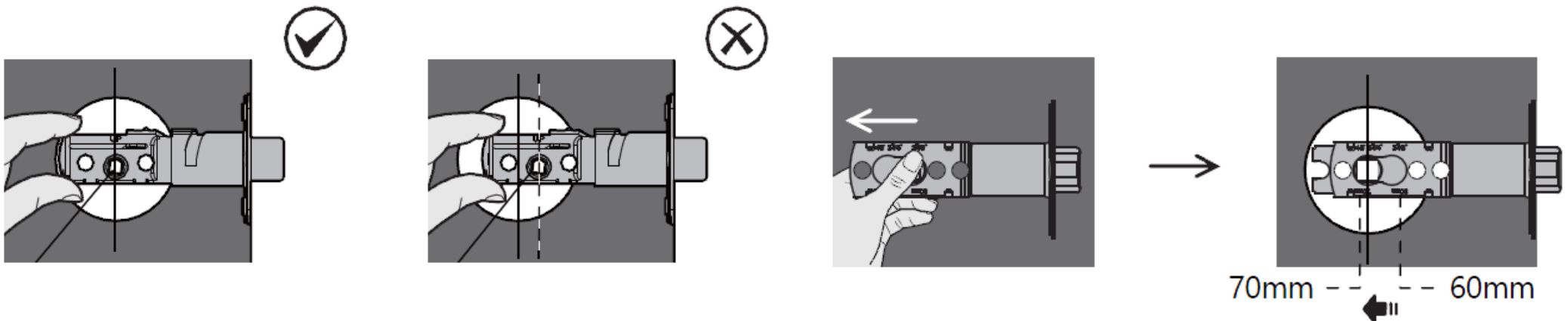
2. Install the latch and strike plate

- Please refer the follow picture to adjust the direction of strike plate and latch.



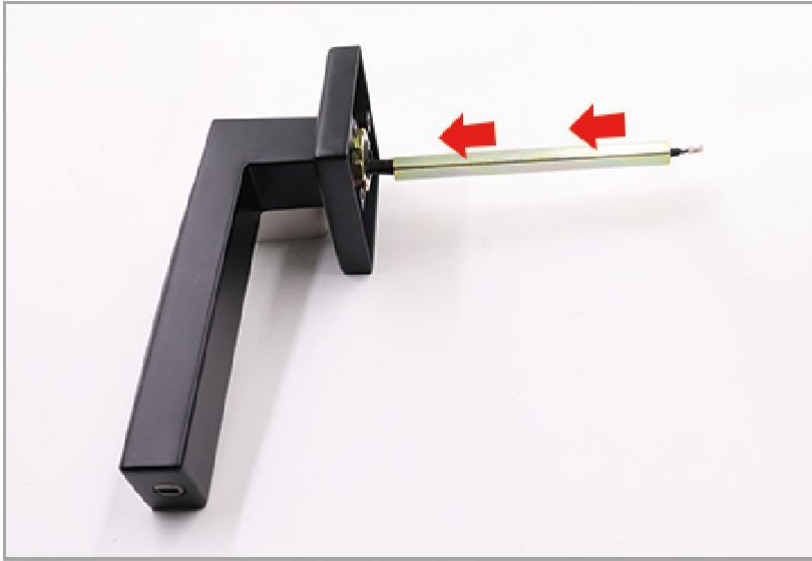
In most cases, the existing strike plate is ready to be used. You may store the plate in box for future use.

- Adjust the latch, make sure the square-shaped hole is centered.

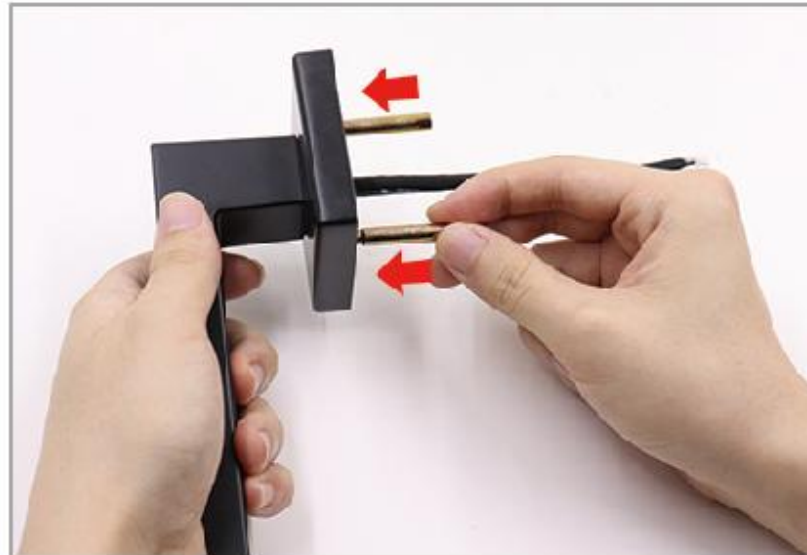


3. Install the door lock

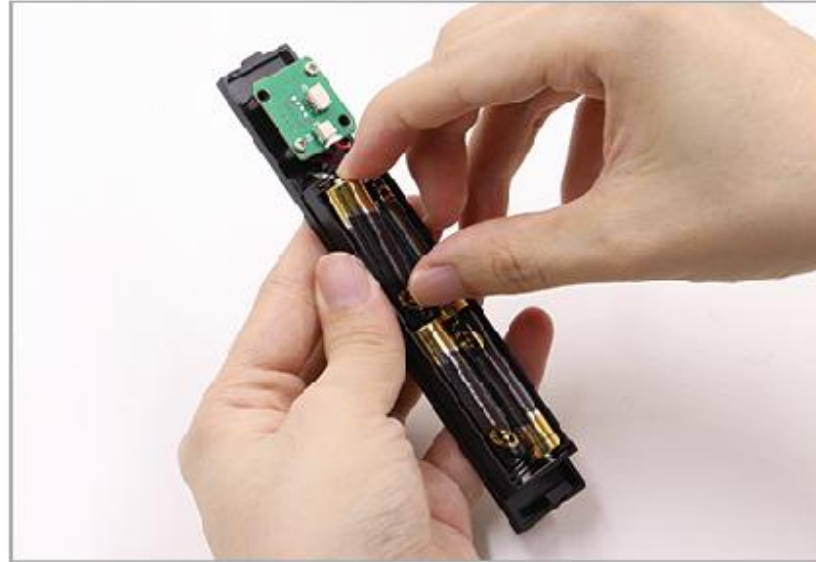
STEP 1. Route the wire through the spindle.



STEP 2. Install connecting rod



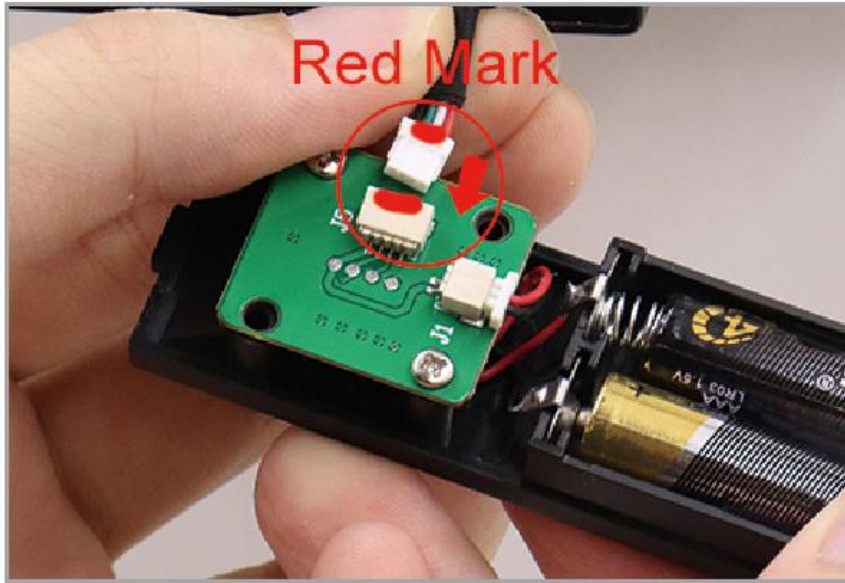
STEP 3. Remove the screw of interior handle and then pull out the cover. Insert 4 AAA brand new batteries according to positive and negative pole.



STEP 4. Insert exterior handle into latch and fix the door handle.



STEP 5. Connect door lock circuit board port, you will hear a beeping beep, keypad of exterior handle lights up.



If you do not hear the prompt sound after installation, please check whether the battery is installed in the wrong direction.

STEP 6. Tighten the screws securing the battery cover.



After completing the above steps, the door lock installation is complete



4. Important! Check after Installation

Please perform the following test before installing the app. If at any step you encounter problems, please refer to the **Trouble Shooting** section of this manual.

1. Always test with door open.
2. Enter default passcode "#123456#", your lock should be unlocked by turning the exterior handle.
3. Any fingerprint can unlock it.
4. Use key to test the exterior knob, your lock should be unlocked by turning the exterior handle
5. Test the interior knob. The bolt should move smoothly in and out.
6. Close the door and check if the latch properly inserts into the strike plate on the door frame.

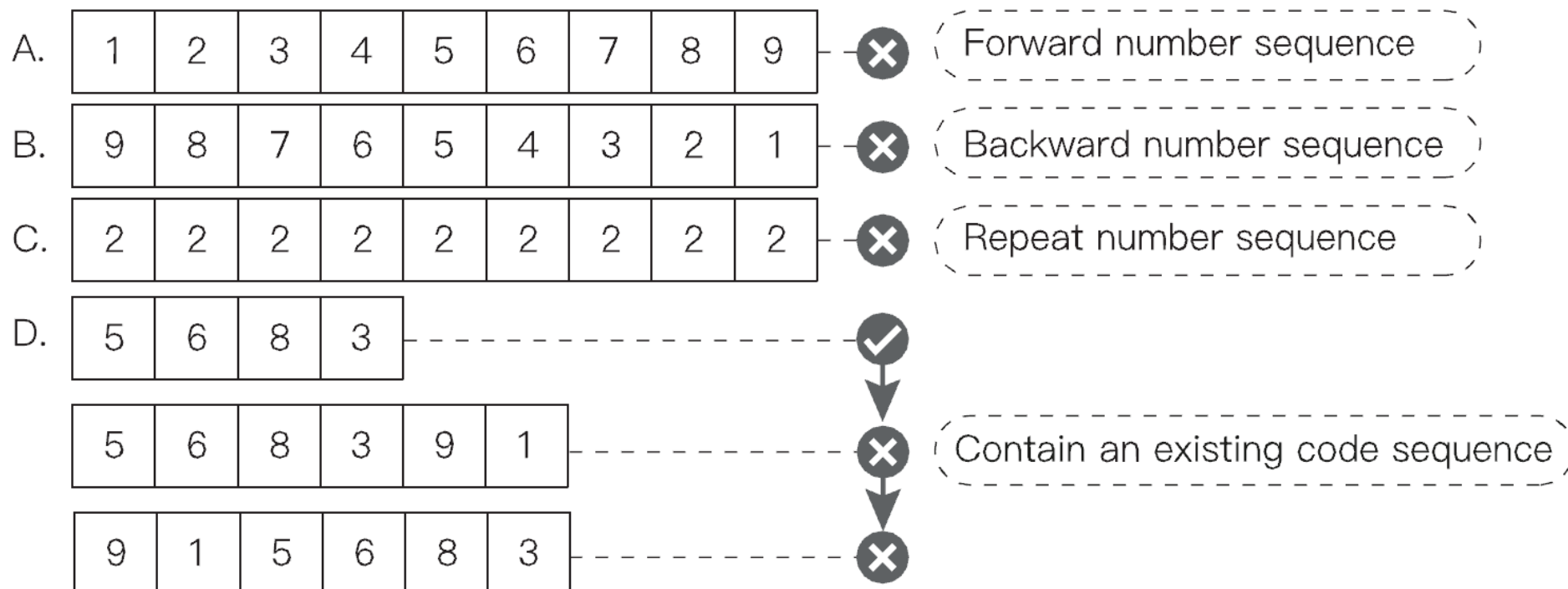


Congratulations! Next you can set up the mobile application.

Programming Instructions

Information & Safety Warnings

- Protect your User Codes and Admin Code.
- Restrict access to your lock's interior assembly and routinely check your settings to ensure they have not been altered without your knowledge.
- This lock meets IP54 water-resistance. It can withstand water splashes; however, it is not waterproof. Do not let water and liquids get into the lock.
- PIN codes don't support the following combination of numbers below.



Definitions

Auto Lock

Automatically locks the door 5 seconds after unlocking.

Normal Open Mode

The lock is always in unlocking status.

Wrong Entry Limit

After 5 unsuccessful attempts at entering a valid PIN code, the unit will shut down for 1 minutes.

Low Battery Indicator

If you hear 9 beeps corresponding with red flashes after pressing any key or lock and unlock the door, that's an indication that the batteries need to be replaced soon. Please replace with 4 new AAA alkaline batteries and do not mix old and new batteries. All settings are retained in the memory when the batteries are removed and replaced.

Silent Mode

The beep sounds when pressing keypad can be muted. But you will still hear low battery and system alerts.

Emergency Power Port

Emergency USB Port can be used when battery is completely dead. Supply power by connecting an external power bank to the TYPE-C port.

Unlock with Fake code

User can prevent pin code exposure from strangers by entering random digits before or after pin code.

<u>83618</u>	<u>137192</u>	<u>14710</u>

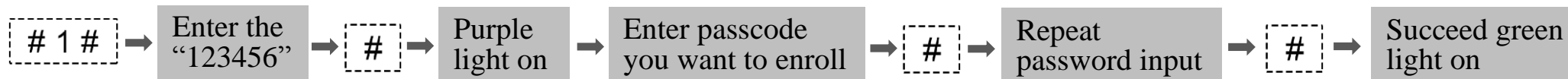
Pasword		

Random digits		

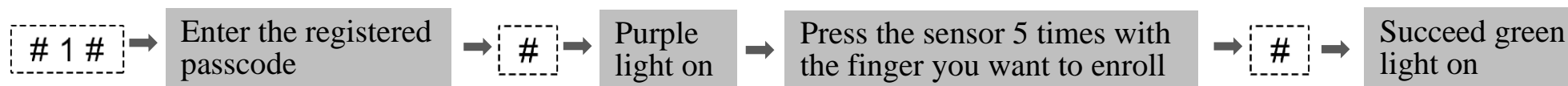
Quick Set Up

- Each programming steps needs to be completed within 5 seconds.
- If you hear rapid beeps with flashing red lights, it indicates entry error or time-out. Please start over

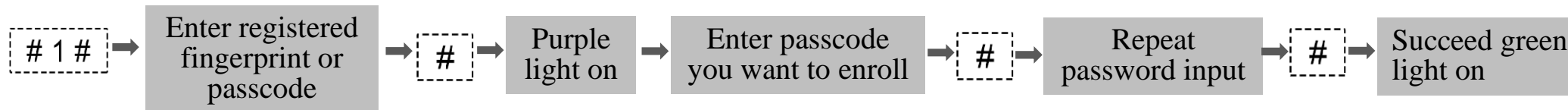
Add PIN Code (6 to 8 digits) for the first time:



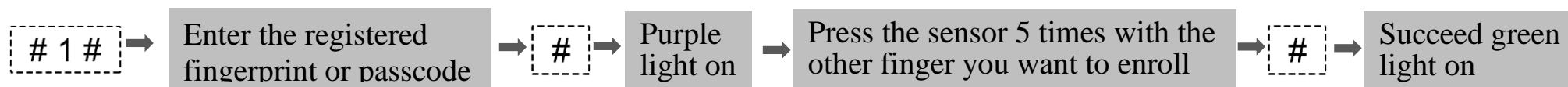
Add Fingerprint for the first time:



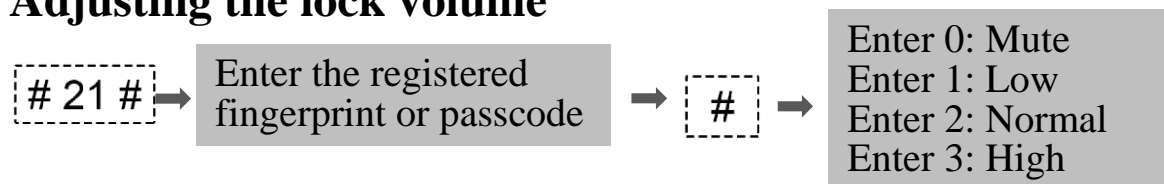
Add User Code:



Add User Fingerprint:



Adjusting the lock volume



SAVE THESE IMPORTANT INSTRUCTIONS FOR EASY REFERENCE.

Normal Open Passage setting

The Normal Open Passage mode lets anyone open the door without any need for a passcode etc., and is great in case of temporary large gatherings and many guests.



Press the button for 2 seconds in the rare handle and the lock will make a “drip” sound to open the normal open passage mode.

(If you want to cancel the normally open mode, operate it again.)

Factory Reset / Delete Admin



Way 1: Please use the included reset pin, strung with the keys, to hold the Reset button for 9 seconds, then release the reset button, the product will be restored to factory settings.

Way 2:

888



Enter the registered fingerprint or passcode



One long drop and the green light flash once to restore the factory settings

Low battery alarm & Emergency Unlock

- When the voltage is lower than 4.8V, the product will alarm for low power. The alarm mode is three beeps every 0.5 seconds, and at the same time the fingerprint and keyboard lights will flash when the handle is activated, three times in a row. Please replace the battery as soon as possible.
- If there is no power at all, you can temporarily supply power through the TYPE-C interface.



Trouble Shooting

Q: After the door lock is installed, there is no response or abnormal behavior.

A: Please check as follows:

- ① Check the battery installation direction and make sure that the battery has sufficient power.
- ② Make sure the battery cover is in place.
- ③ The connecting screws are not tensed/balanced enough. Please refer to the installation instructions.

Q: What prompt will I receive when the battery is low?

A: You will get an alarm as "battery is low, please replace" when the remaining unlock times counts below 50, this is also reminded on your App. Remember to change the battery in time.

Q: What should I do if the battery is totally dead?

A: There is a TYPE-C port at the front handle. You can use this interface to temporarily power the door lock through a power bank. Then please change the battery in time.

Q: The fingerprint recognition success rate is different from what the manual says.

A: When entering the fingerprint, please try to move the position of the fingertip slightly every time you enter the fingerprint, so that you can enter a larger fingerprint area. Please try to cover areas that are frequently used.

Important safeguard

- Keep at least one key out of the door for emergency.
- Dispose of used batteries according to local laws and regulations.
- When the battery is out of power, you can unlock the door with key, or supply the lock with power through the USB port and use fingerprint or password to unlock it. Prevent water and liquids from getting into the lock's electric parts or battery compartment.
- Replace batteries immediately as soon as you are warned.

CAUTION: Prevent unauthorized entry. Since anyone with access to the interior assembly can factory reset the door knob, routinely check the administrator code to ensure they have not been altered without your knowledge.

