

# User Manual

Model No.: AF07B01

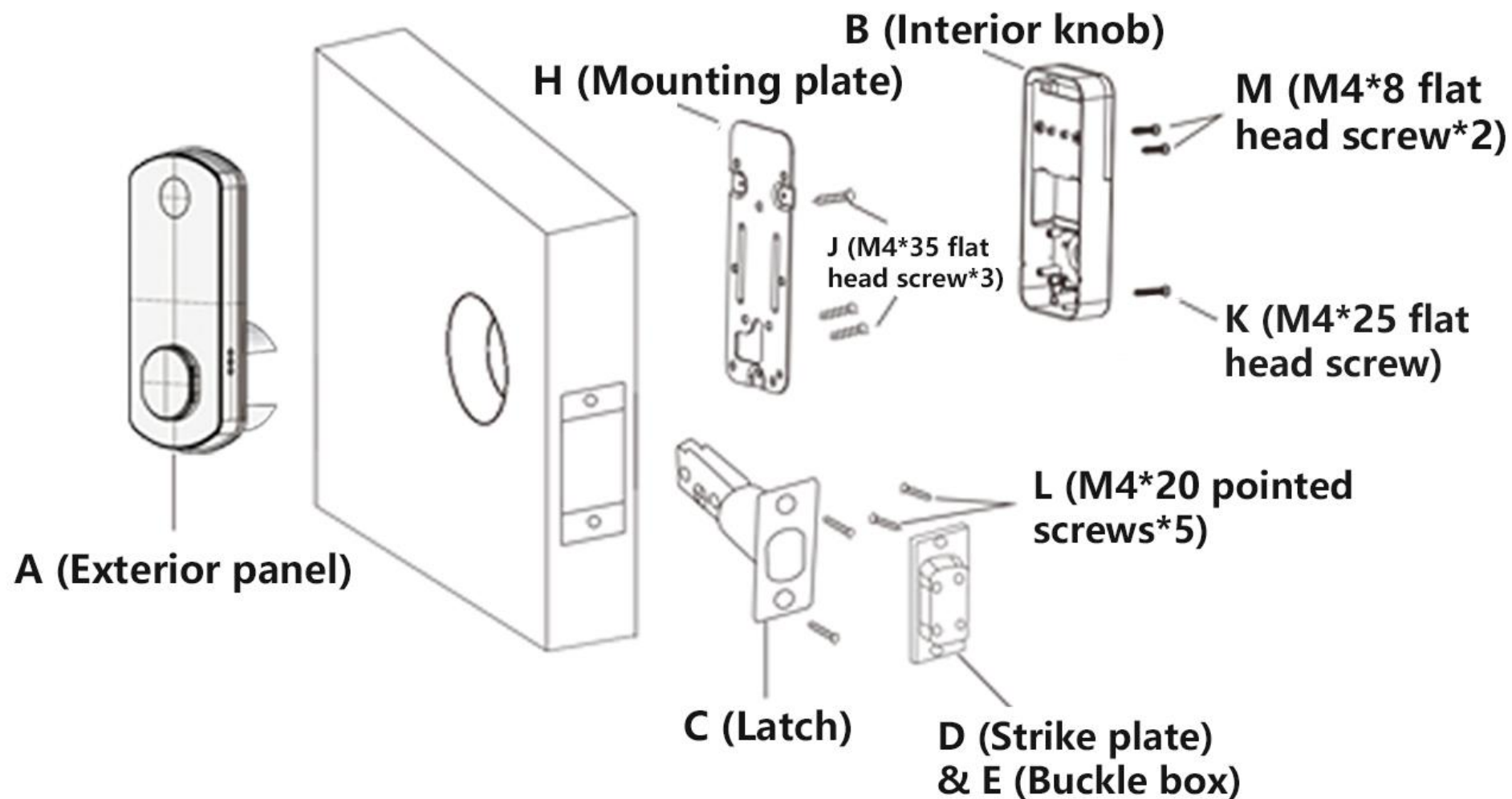


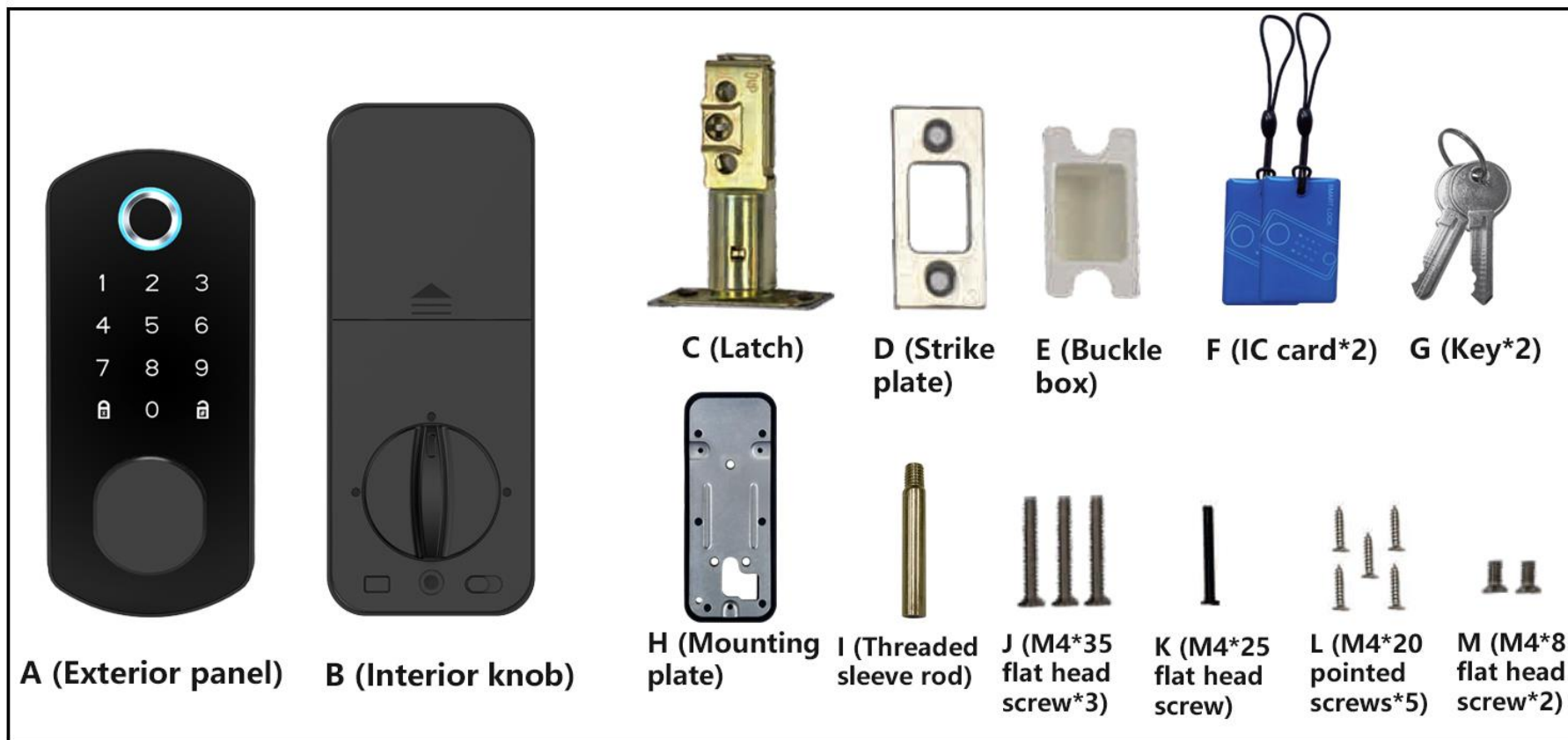
**IMPORTANT:** Read the instructions carefully before operating the appliance and keep them for future reference.

# Contents

What's in the Box? .....	1
Installation Guide.....	3
1. Prepare the door and check dimensions.....	3
2. Install the strike plate and adjust the latch .....	4
3. Install the door lock .....	6
App Operation Guide.....	12
1. Download and sign up the app.....	12
2. Add door lock by app.....	13
3. View unlock records .....	16
4. Add more administrators by app .....	17
5. Delete your device (force initialize your lock) .....	18
Other Settings .....	19
1. Back lock .....	19
2. Emergency USB charging port.....	20
Trouble Shooting .....	20
Important Safeguard .....	21

# What's in the Box?





TOOL REQUIRED:



USE OF A POWERED SCREWDRIVER IS NOT RECOMMENDED

## Batteries

Smart lock requires 4 AAA batteries to be purchased separately, using only new and non-rechargeable AAA Alkaline batteries for the best results.



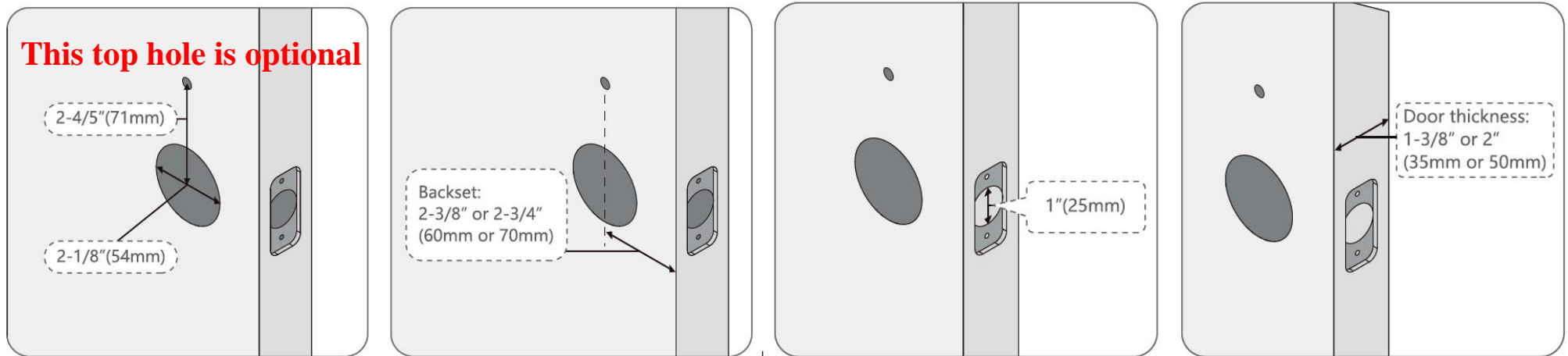
**DO NOT mix new batteries with used batteries.**

# Installation Guide

## 1. Prepare the door and check dimensions

Measure to confirm:

- ◆ Door hole below the door is 2-1/8" (54mm).
- ◆ Backset is either 2-3/8" or 2-3/4" (60 or 70mm).
- ◆ Latch hole in the door is 1" (25mm).
- ◆ Door thickness is between 1-3/8" and 2" (35mm to 50mm).
- ◆ Optional: Top hole center distance above door hole center point is 2-4/5" (71mm).



If your door does not have the ready-made lock mounting holes, you need to complete the additional hole-drilling work yourself.

**⚠ DO NOT** install this product if your door thickness is out of range.

## 2.Install strike plate and adjust the latch

- Use L(Screws) to fix the D (Strike plate) and E (Buckle box) to the door frame.
- Please make sure the C (Latch) is unlocked before installation, if the C (Latch) is locked, use the key to unlock it.



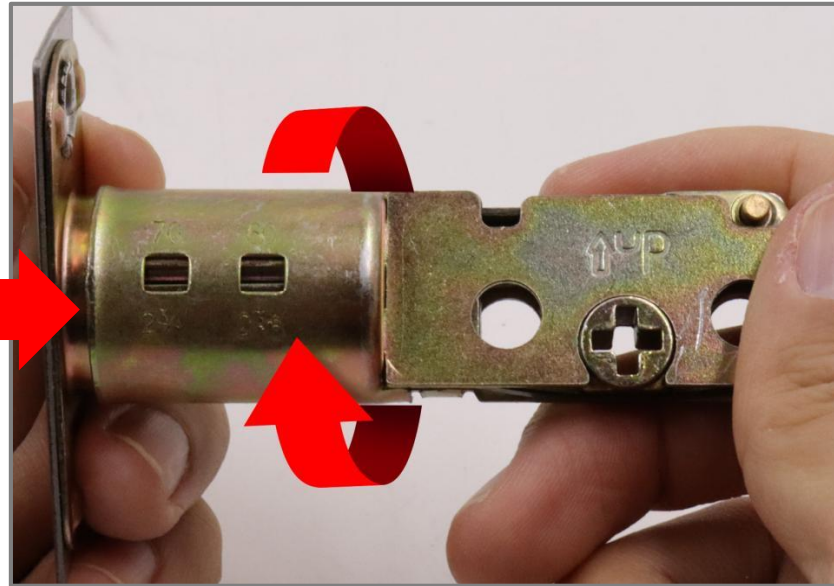
Figure I-Locked



Figure II-Unlocked

- If your door backset is 2-3/8" (60mm), please install the C (Latch) directly (refer to Figure II).
- If your door backset is 2-3/4" (70mm), please follow the steps below to adjust the C (Latch) before installation.

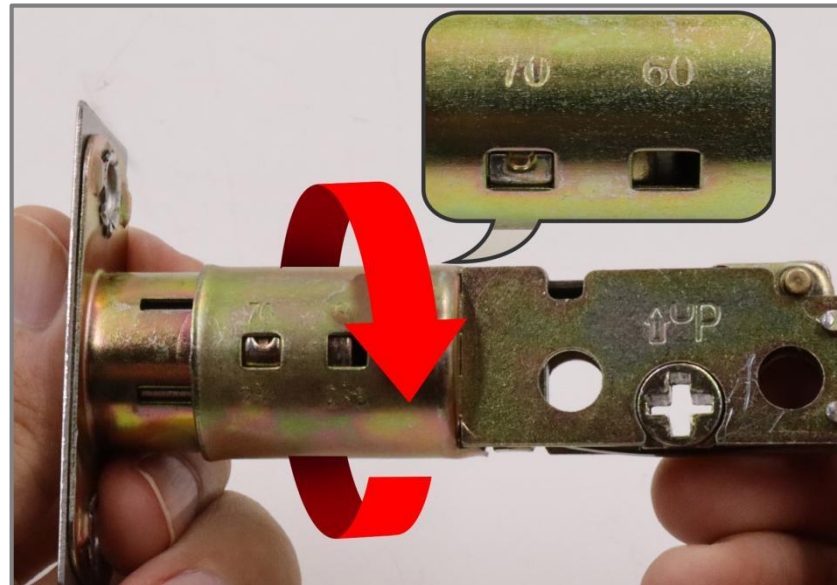
Step 1: Rotate the C (Latch) body upwards.



Step2: Pull the C (Latch) body and align the two holes.

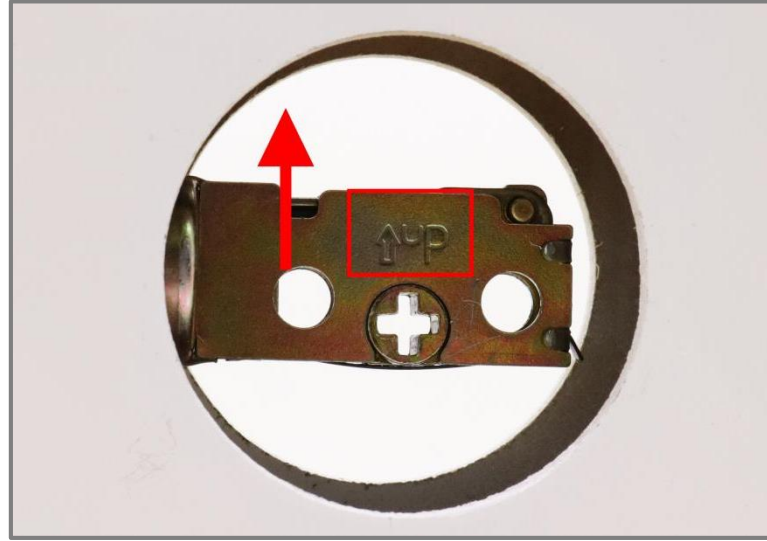


Step3: Rotate the C (Latch) body downward and snap the buckle into the 70mm hole.

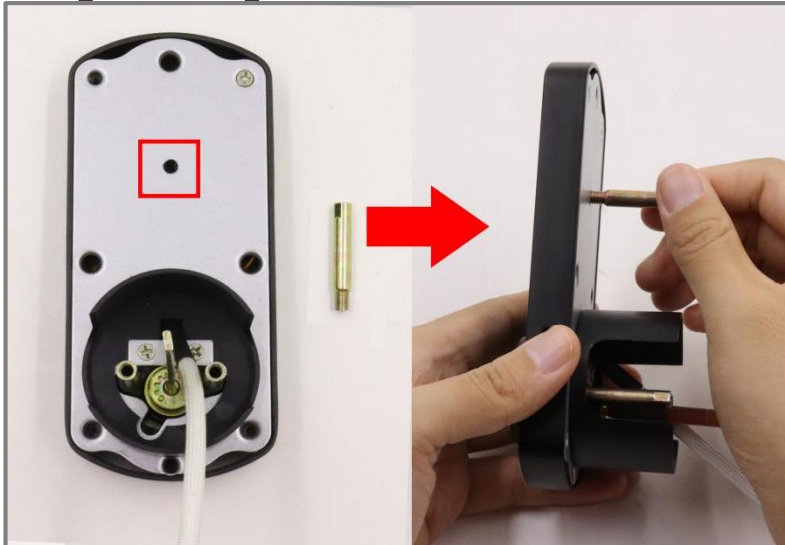


### 3. Install the door lock

STEP 1. Use (L)screws to fix C (Latch), note that the "↑UP" mark is upward and the keyhole is downward, as shown in the picture.

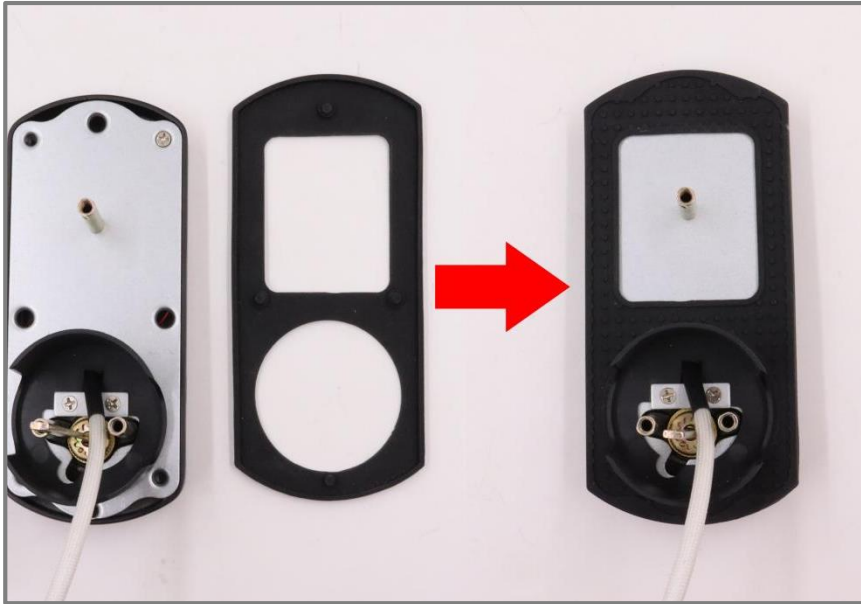


Step 2: (Optional) Secure I (Threaded sleeve rod).

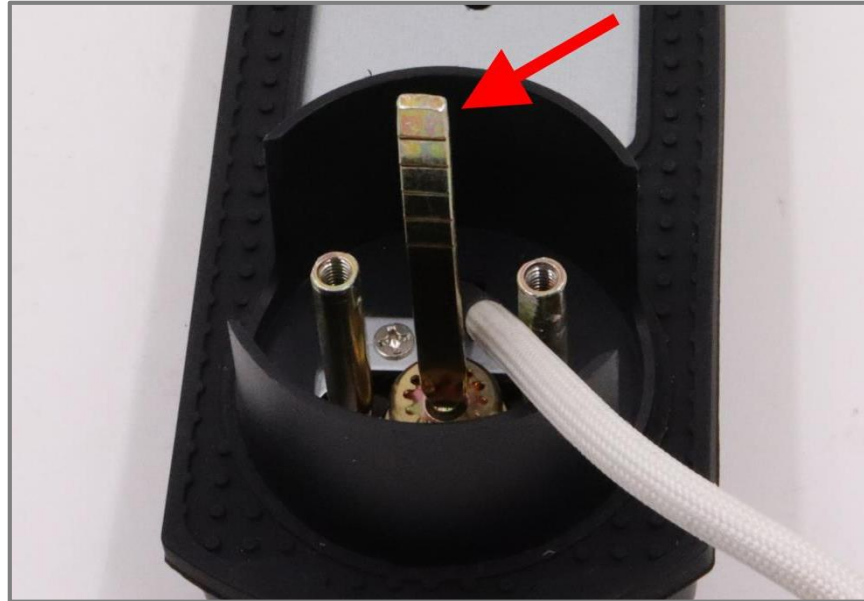


If there is only one hole drilled in the door, this step can be ignored.

STEP 3. Secure the silicone ring to the A (Exterior panel).



STEP 4. Adjust the lock's spindle so that it appears "—".



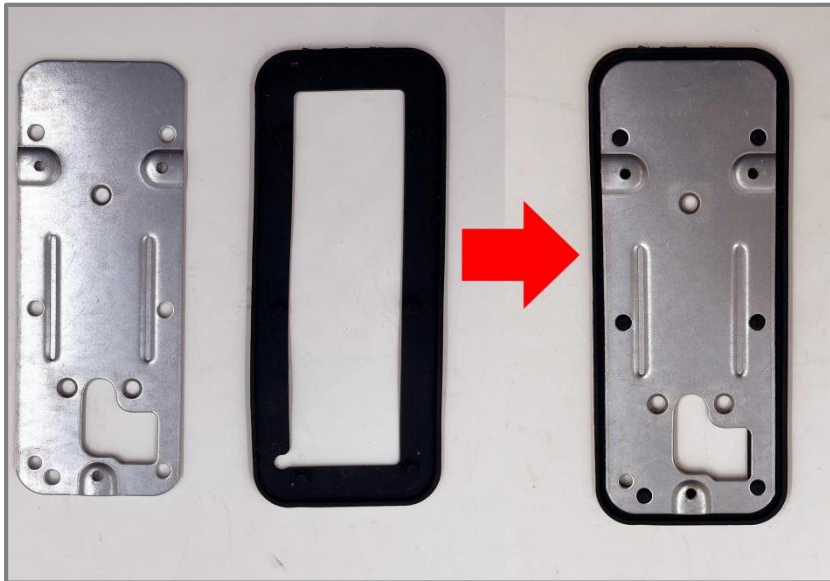
STEP 5. The connecting wire must pass under the C (Latch).



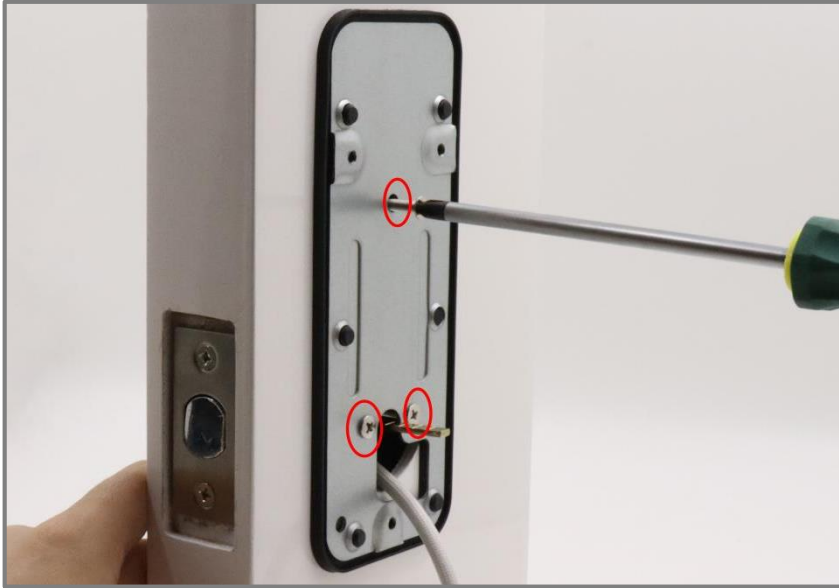
STEP 6. Align the A (Exterior panel) horizontally with the hole and insert it into the C (Latch).



STEP 7. Secure the silicone ring to the H (Mounting Plate).

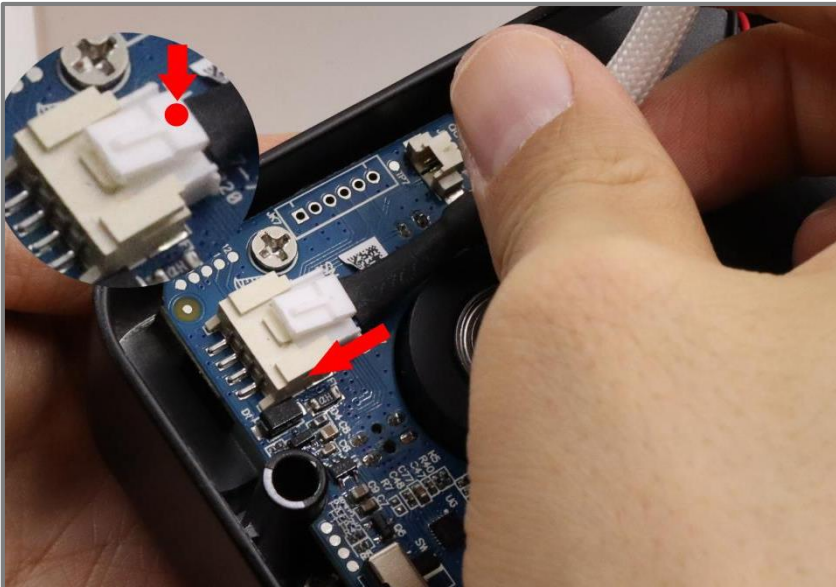


STEP8. Use (J) screw and I (Threaded sleeve rod) to fix H (Mounting plate) on the door panel facing the room.



The I (Threaded sleeve rod) on the top makes the lock more secure, it is optional.

STEP9. Insert the cable into the Connector of the Interior knob (B). (Ps: Press the end of the connector when pulling out).



Step 10. If your door opens to the left, adjust the door knob to the "|" sign. If your door opens to the right, adjust the door knob to the "—" sign.

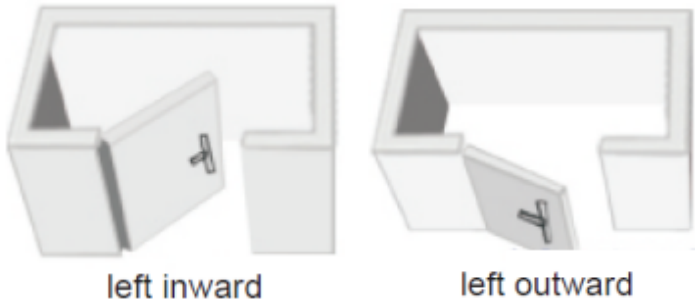


Door to left



Door to right

Note: Facing the room, C (Latch) is in the right side of the door for opening the door to the left, and C (Latch) in the left side of the door is for opening the door to the right.



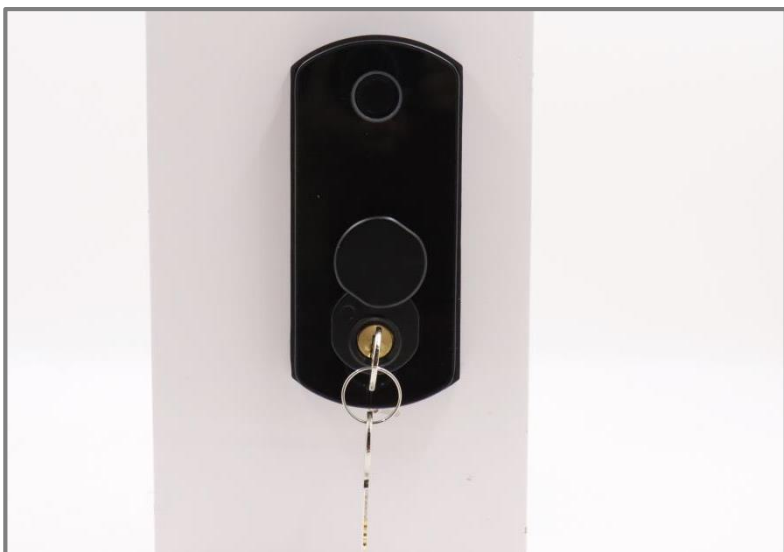
Step 11. Use 2 screws (K) and 1 screw (M) to secure the Interior knob (B) with the Mounting Plate (H).



Step 12. Install 4 brand new AAA batteries and battery cover.



Step 13. Insert the key to test whether it is locked and unlocked normally. If not, please check whether your operation is consistent with the previous steps.



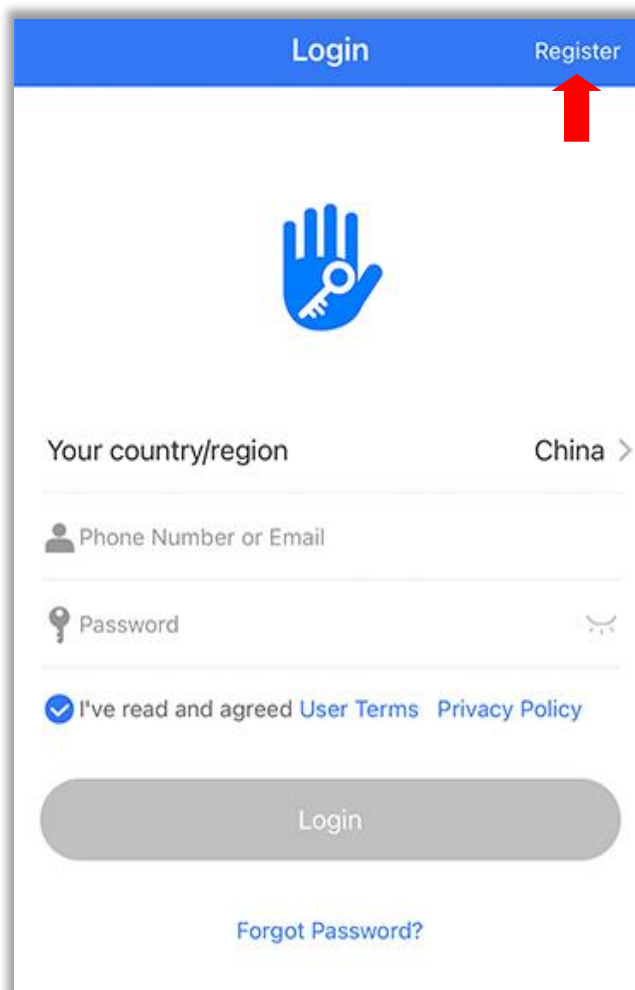
# App Operation Guide

## 1. Download and sign up the app

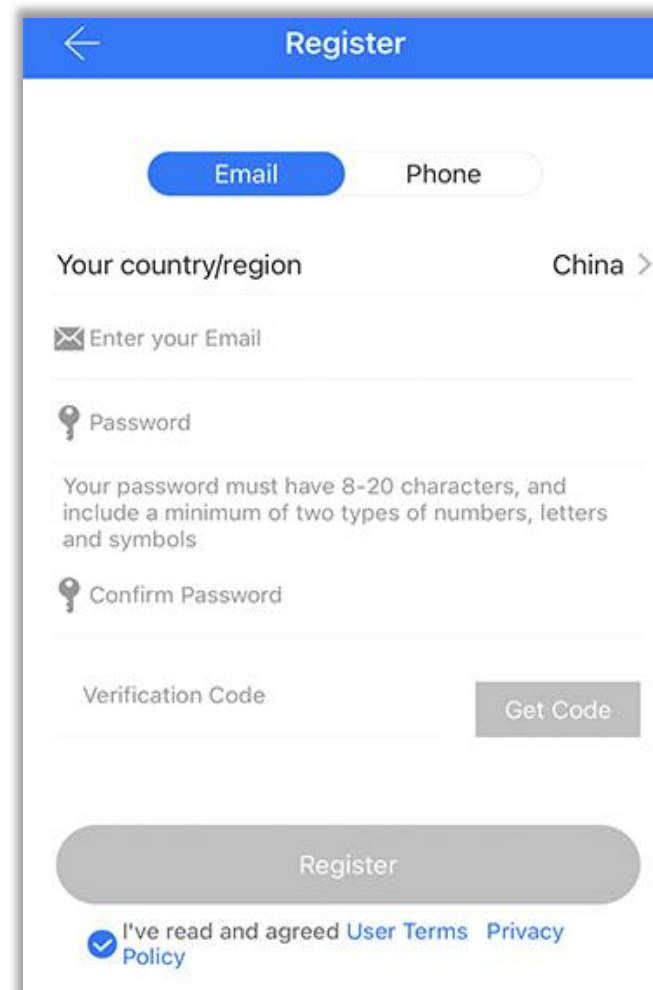
Search and download **TTLock** on the App Store or Google Play. If this is your first time using the APP, you need to register an account to manage your lock.



Or scan the QR code above to get TTLock

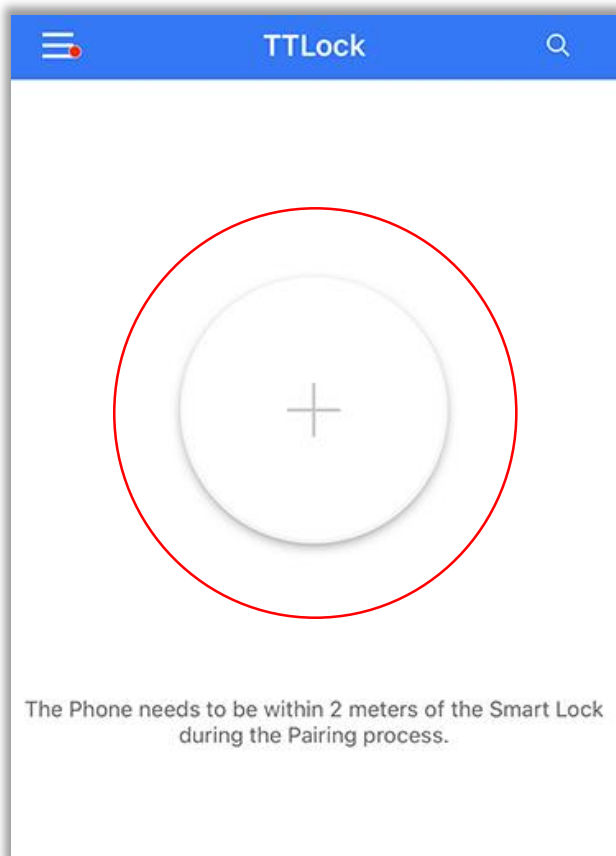


The Login screen features a blue header with 'Login' and 'Register' tabs. A red arrow points to the 'Register' tab. Below the header is a blue hand icon holding a key. The form includes fields for 'Your country/region' (set to 'China'), 'Phone Number or Email', and 'Password'. A checkbox indicates 'I've read and agreed User Terms Privacy Policy'. A large grey 'Login' button is at the bottom, with a 'Forgot Password?' link below it.

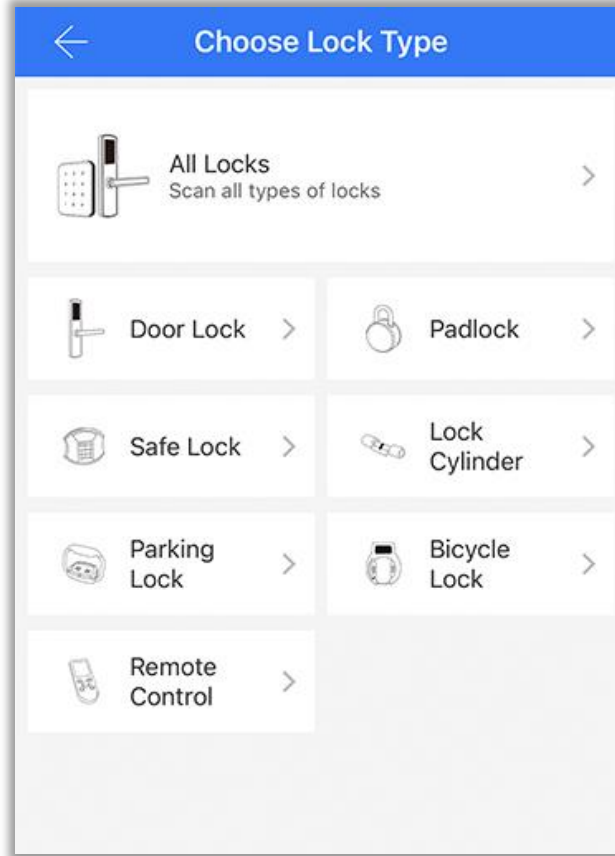


The Register screen has a blue header with a back arrow and a 'Register' tab. It offers 'Email' and 'Phone' registration options. The 'Email' option is selected. The form includes fields for 'Your country/region' (set to 'China'), 'Enter your Email', 'Password', and 'Confirm Password'. A note specifies password requirements: 'Your password must have 8-20 characters, and include a minimum of two types of numbers, letters and symbols'. There is a 'Verification Code' field with a 'Get Code' button. A large grey 'Register' button is at the bottom, with a checkbox indicating 'I've read and agreed User Terms Privacy Policy'.

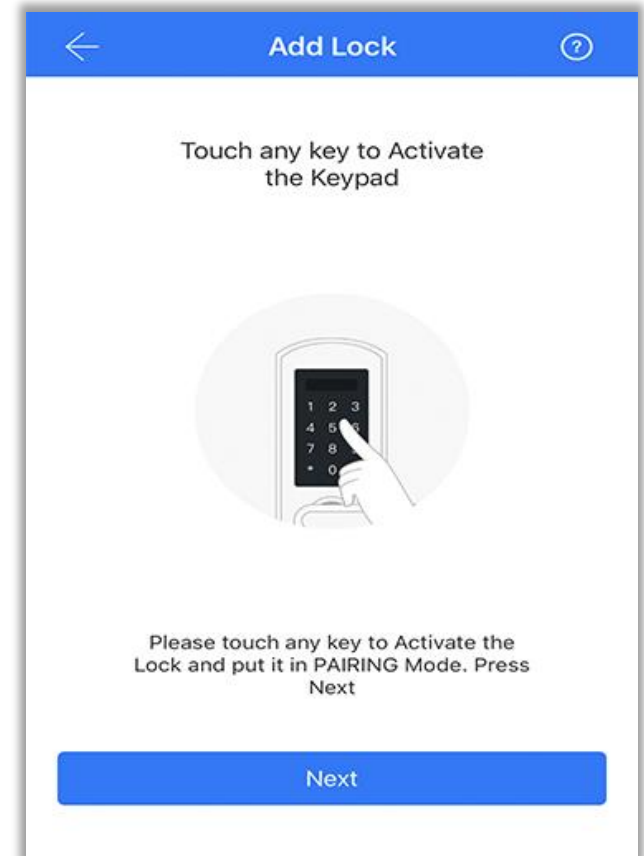
## 2. Add door lock by app



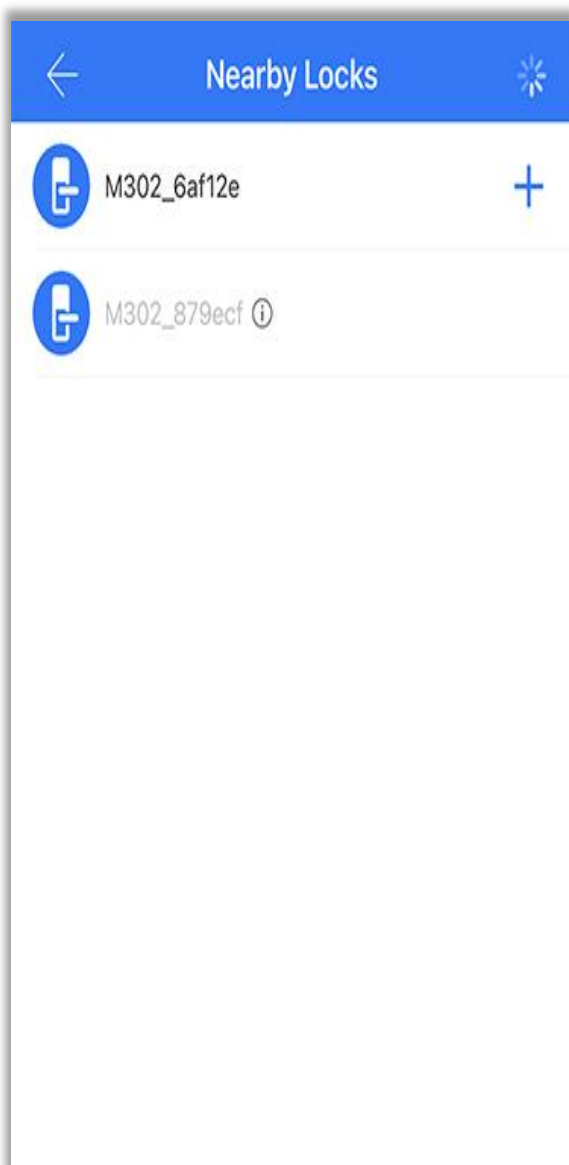
① Click the “+” symbol to add.



② Select the “Door Lock”.



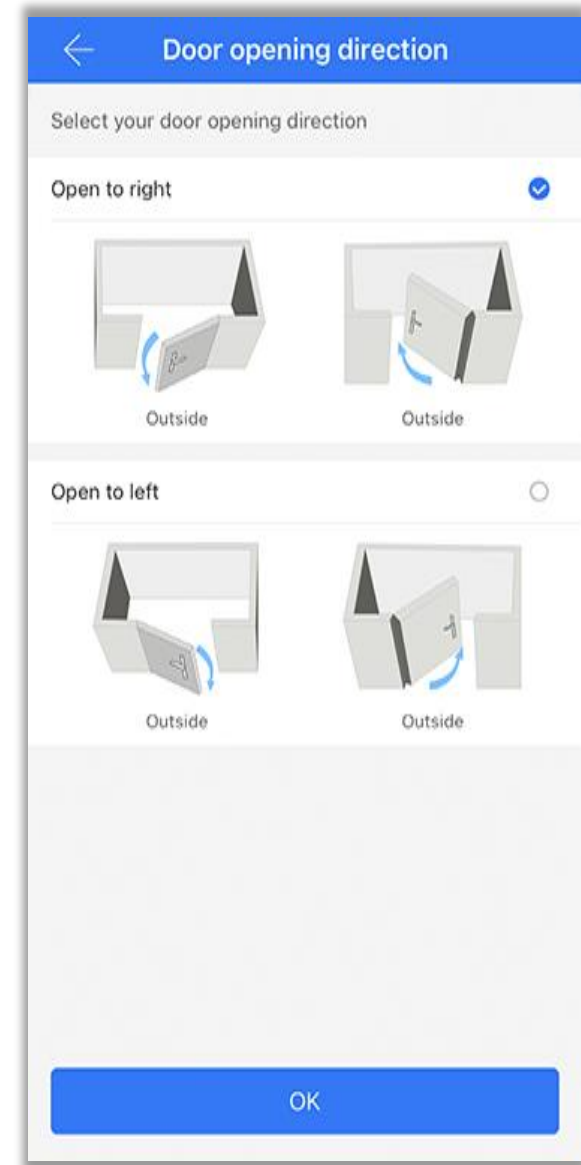
③ Click the “Next”.



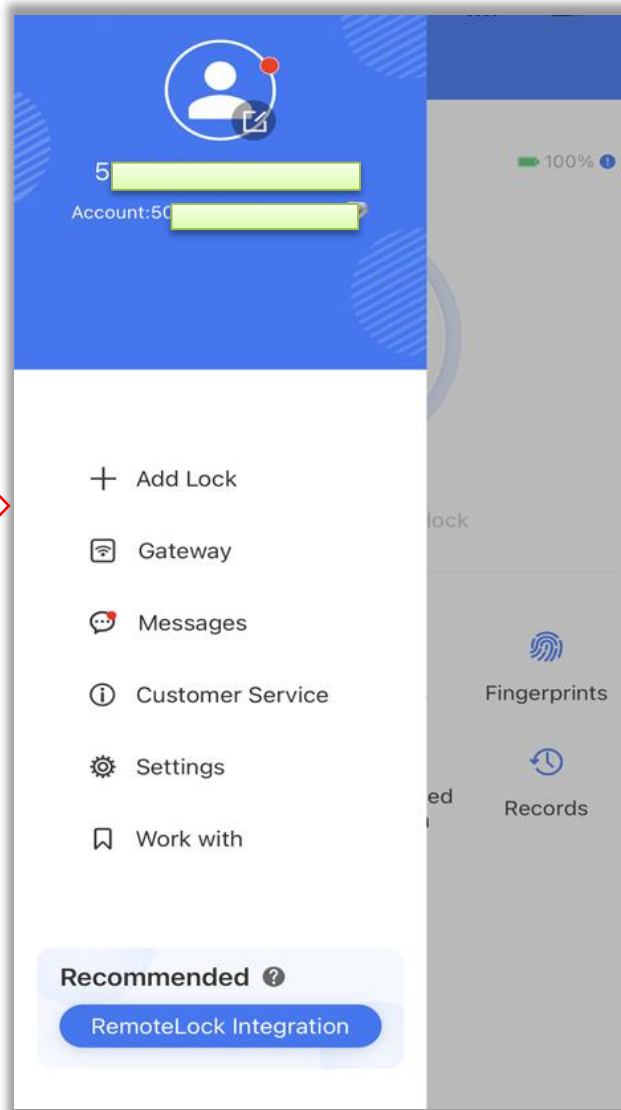
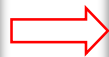
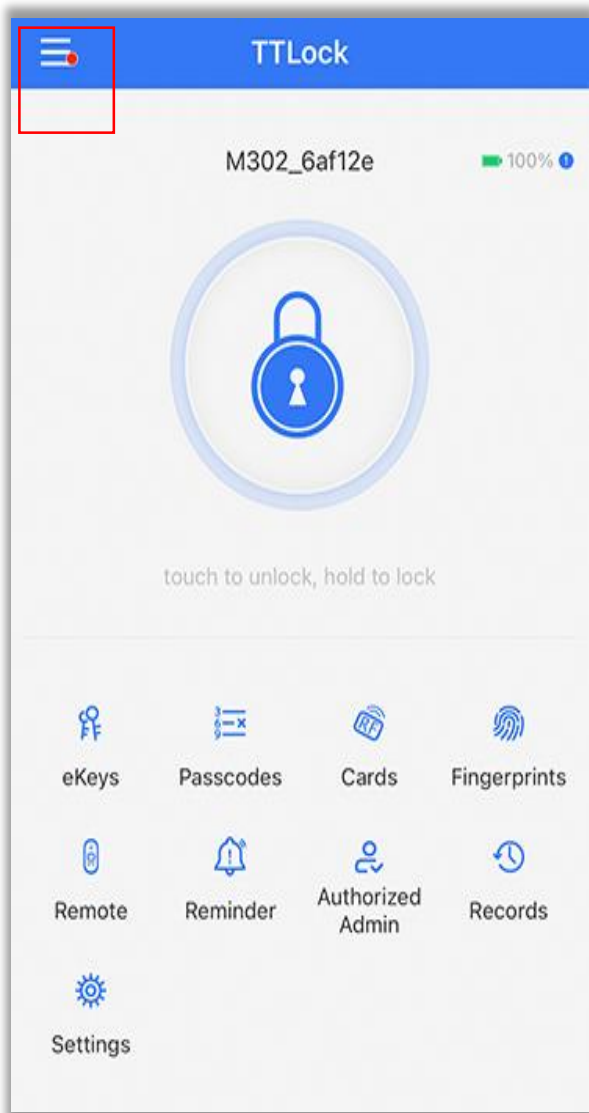
④ Add the lock.



⑤ Click the name box to rename the lock, then click "OK".




⑥ Choose the direction in which you open the door according to the actual situation.



⑦Door lock added successfully.

The custom password option  
is set by the administrator.

1. Lock and unlock button( click to unlock, long press to unlock).

2. Long press the “” on the exterior panel to quickly lock.

eKeys

Add the Email or phone number of your family or friends, and the APP will send them the electronic passwords.

Passcodes

Passwords are system-generated or custom-generated.

Cards

Adding the IC card, place the card in the numeric keyboard sensing area.

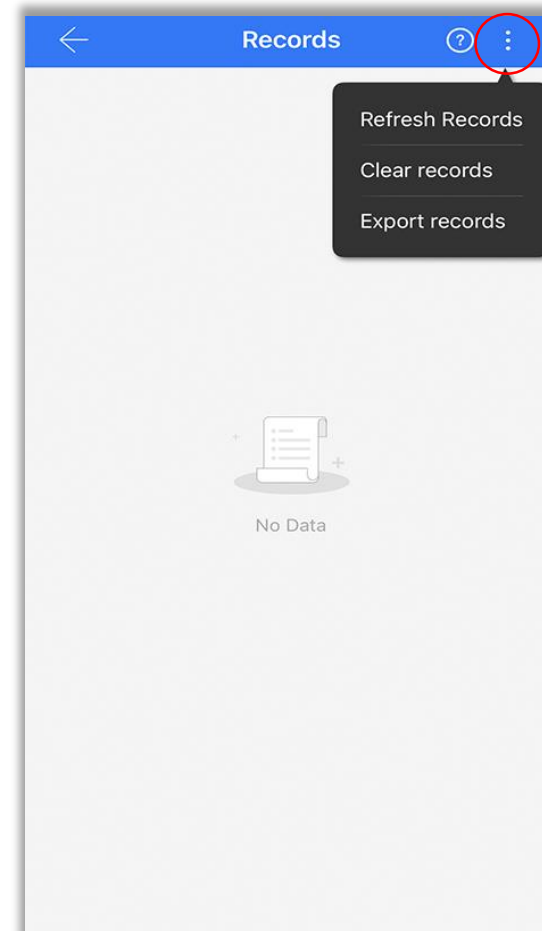
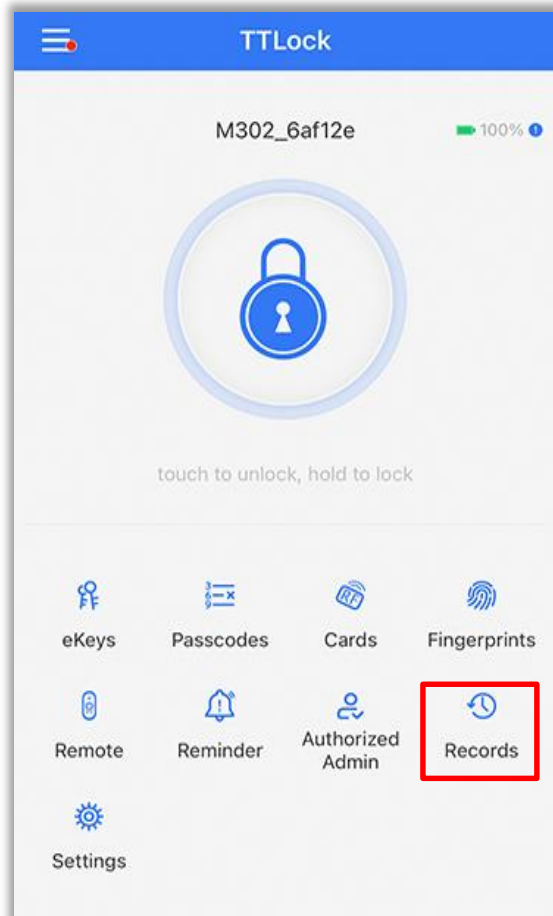
Fingerprints

Add fingerprint in fingerprint sensing area.

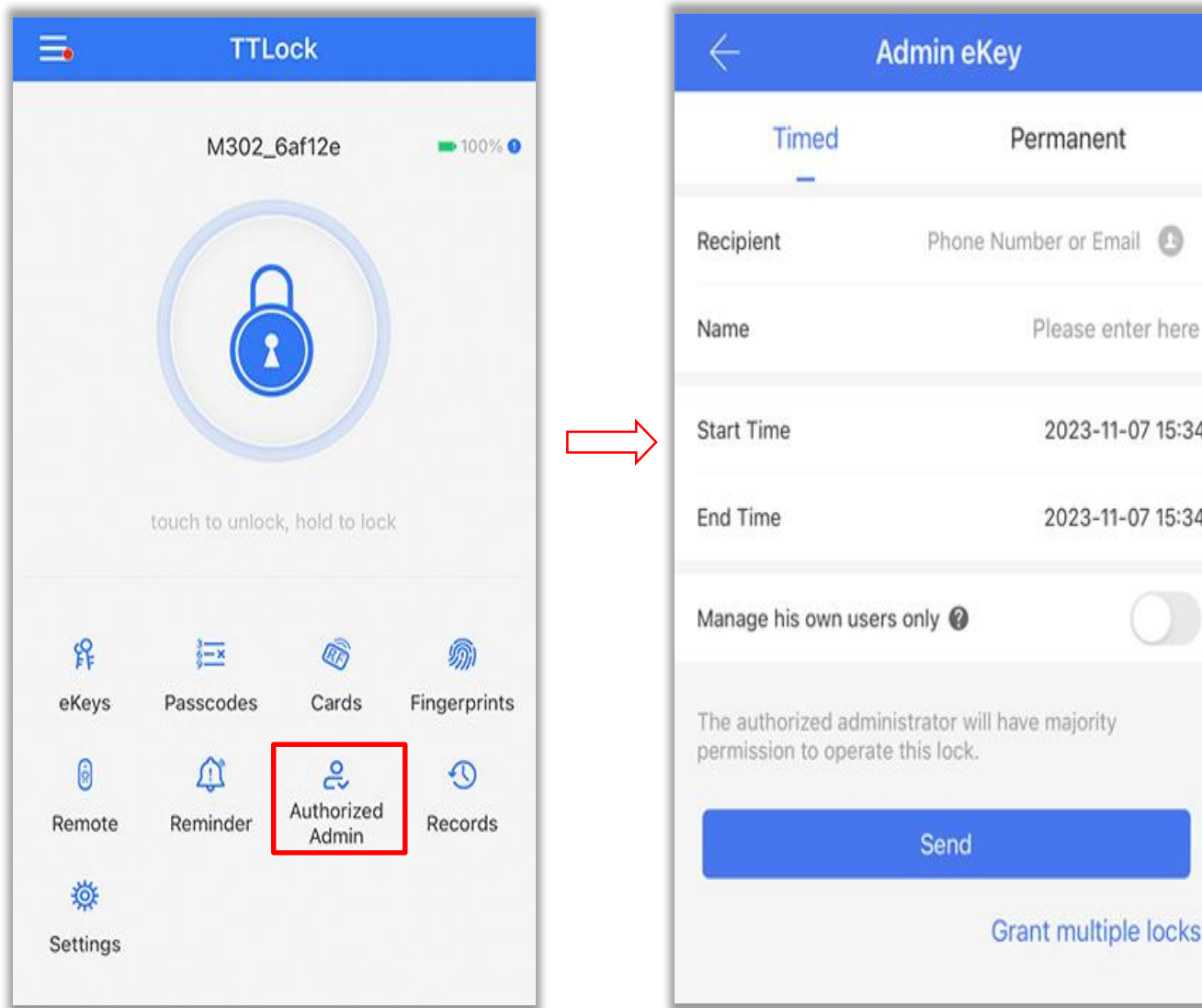
P.S. Password generated by the system for other options (the generated password must be activated once within 24 hours, otherwise it will automatically expire. The custom password option is set by the administrator.

### 3. View unlock records

If you want to check who has entered your home, you can also check the unlocking records on the APP.



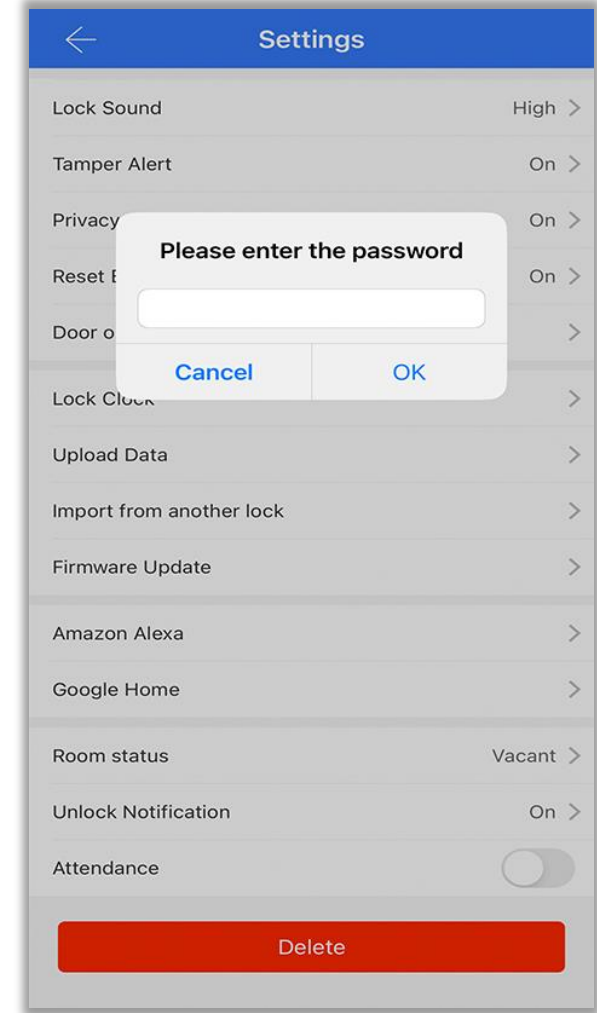
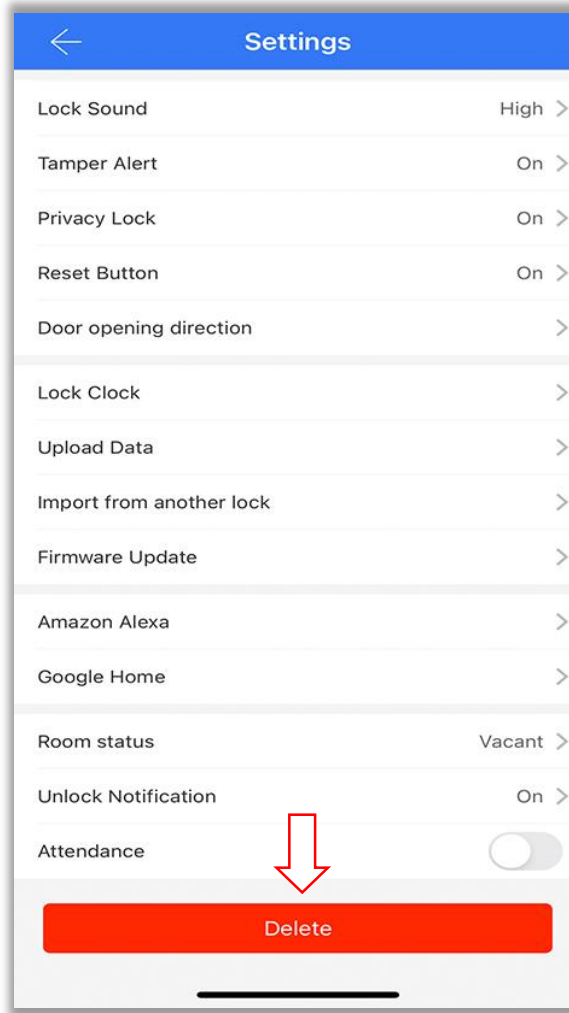
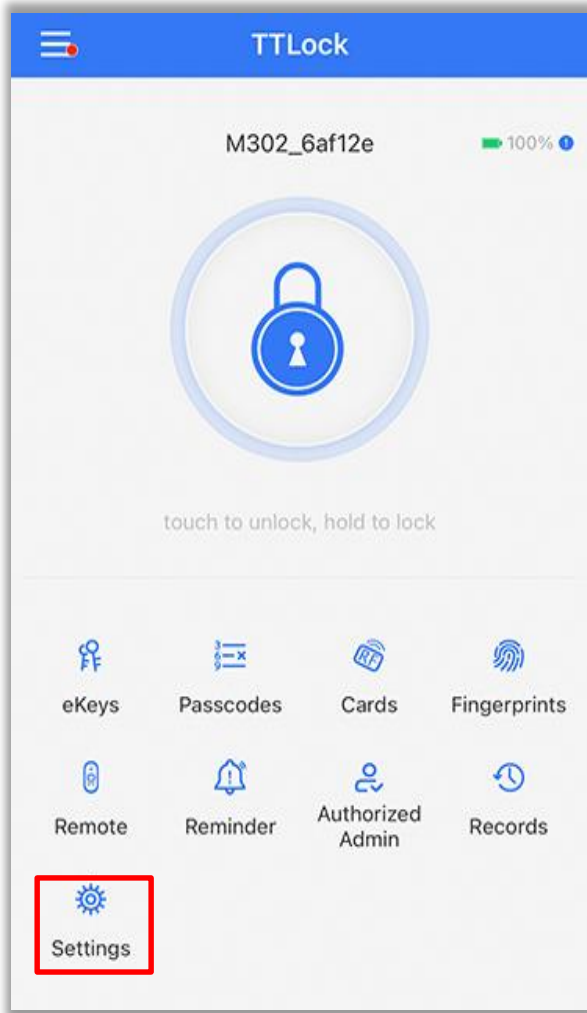
## 4. Add more administrators by app



You can also add people other than yourself as administrators. You can give them permanent access, or you can set a specific time limit for them.

## 5. Delete your device (force initialize your lock)

Click “Settings” on the main Page of the APP and click “Delete”, then enter your account login password to delete the device, all data will be cleared, and the door lock needs to be re-bind to an account.



# Other Settings

## 1. Back lock

Press the back lock button on the interior knob (B) for electronic lock/ unlock.



Press and hold the button for 3 seconds, and there will be an AI voice prompt "Secure lock is on", indicating that the anti-lock mode is on.

**Note:** After back lock, only the application administrator can unlock the lock, other fingerprints, passwords, cards and authorized administrators cannot unlock the lock.)

### ● Cancel back lock

Press the button and there will be an AI voice prompt "Secure lock is off", indicating that the anti-lock mode is turned off.

## 2. Emergency USB charging port

- The APP will display the remaining battery level of the lock.
- If the battery is completely exhausted, you can temporarily power the device through the TYPE-C interface. (Or you can use the key to unlock.)



## Trouble Shooting

**Q: After the door lock is installed, there is no response or abnormal behavior.**

**A:** Please check as follows:

1. Check the battery installation direction and make sure that the battery has sufficient power.
2. Make sure the battery cover is in place.
3. Pay attention to the direction you open the door. Make sure the knob is placed correctly during installation.

**Q: How do I know the battery is low?**

**A:** You can check the remaining battery level on the APP, and remember to replace the battery in time.

**Q: I lost my phone, how to reset the door lock as soon as possible for safety?**

**A:** In this case, we recommend that you contact us to obtain a password for initialization and then set a new administrator password.

**Q: The fingerprint recognition success rate is different from what the manual says.**

A: When entering the fingerprint, please try to move the position of the fingertip slightly every time you enter the fingerprint, so that you can enter a larger fingerprint area. Please try to cover areas that are frequently used.

## Important Safeguard

- Keep at least one key out of the door for emergencies.
- When sending a user code, always double-check that you are sending it to the correct recipient.
- Dispose of used batteries according to local laws and regulations.
- When the battery is dead, you can unlock the door with key, or supply the lock with power through the USB port and use fingerprint or password to unlock it. Prevent water and liquids from getting into the lock's electric parts or battery compartment.
- Pay attention to the remaining battery level of the device on the APP. When it is almost out of power, please replace the battery as soon as possible.

**CAUTION:** Prevent unauthorized entry. Since anyone with access to the interior assembly can initialize door lock, routinely check the administrator code to ensure they have not been altered without your knowledge.

